



HP Designjet Z3200 Photo Printer series



This 12-ink HP Designjet, with new HP 73 Chromatic Red ink, delivers long-lasting gallery-quality prints in black and white and color. It enables easy calibration and profiling with its embedded spectrophotometer¹ and also delivers great ink efficiency².

Produce gallery-quality black-and-white and color prints

- Color and black-and-white print permanence of 200 years³ on a range of HP and HP Hahnemühle papers.
- Beautiful black-and-white prints have smooth transitions, true neutral grays thanks to the HP Quad-black ink set.
- Get exceptional gloss uniformity and minimize bronzing on most glossy photo papers with HP Gloss Enhancer.⁴
- This printer's expanded color gamut achieves 95% PANTONE[®] coverage⁵ enabled by its new chromatic red ink.
- Over 50 HP papers supported, from photo and fine art papers to coated and display-graphic printing materials.

The HP Designjet Z3200 Photo Printer series is ideal for professional photographers, digital fine artists, print service providers, graphic designers, and pre-press professionals who want to create:

- Gallery-quality prints
- Portraits
- Limited editions
- Albums
- Art reproductions
- Large-format designs
- Proofs

Easily calibrate and profile with HP DreamColor Technologies

- Calibration and profiling are made simple with HP DreamColor Technologies and embedded spectrophotometer.¹
- Expect consistent color from print to print regardless of fluctuating environmental conditions.
- Simplify workflows: easily access, create, and share paper presets⁶ using the enhanced HP Color Center.
- Get questions answered with the HP Knowledge Center, and control color settings with Adobe[®] Photoshop[®].⁷

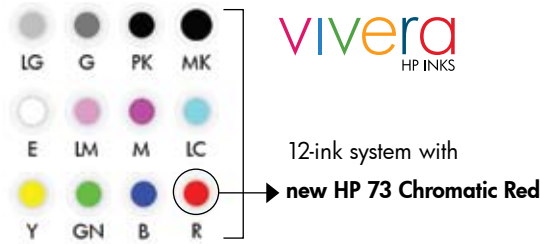
Achieve productive operation and great ink efficiency²

- Expect always-on quality with proactive automatic servicing routines that result in great ink efficiency.²
- Optical Drop Detector (ODD) prevents nozzle clogging—and, as a result, printing errors and media waste.
- Rich, dark blacks on matte and glossy papers—and you don't have to swap cartridges.
- This printer contains an HP Embedded Web Server, print previews, and other efficiency-enhancing features. Embedded TIFF, JPEG, and Adobe PS3/PDF RIP—enables direct job submission, queuing, nesting capabilities⁸ for a more efficient operation so you save time and money.
- Preserve resources and your budget. Predictable, reliable printing leads to more efficient printing, which is good for your business and can reduce the impact of printing on the environment.

WHAT DO YOU HAVE TO SAY?

Create leading gallery-quality black-and-white and color prints with the Vivera Color Ink System

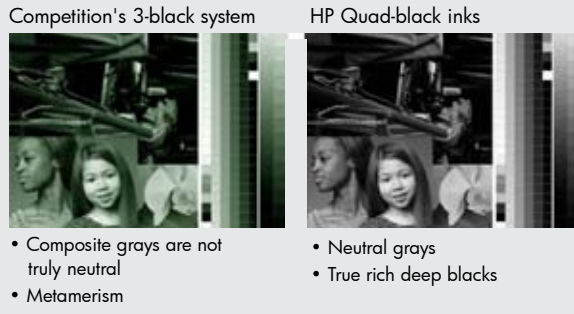
COLOR



12-ink system with
new HP 73 Chromatic Red

- Excellent gloss uniformity and minimal bronzing on glossy and semi-glossy papers thanks to HP Gloss Enhancer

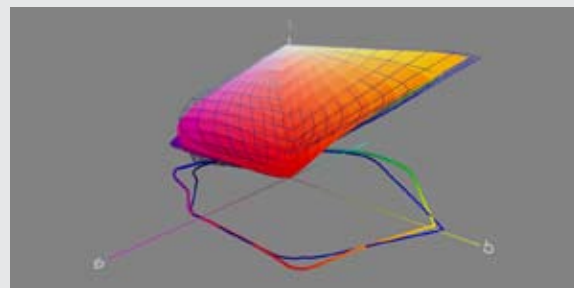
B&W



- Composite grays are not truly neutral
- Metamerism
- Neutral grays
- True rich deep blacks

NEW RED

- The new HP 73 Chromatic Red ink provides a wide color gamut that meets the needs of photographers, graphic artists, and pre-press professionals alike.



The color gamut chart above shows in detail the wider gamut of reds that the HP Designjet Z3200 Photo Printer (in solid) achieves in comparison to one of its competitors. HP Premium Instant-dry Gloss Photo Paper was used for the demonstration.

Easy calibration and profiling

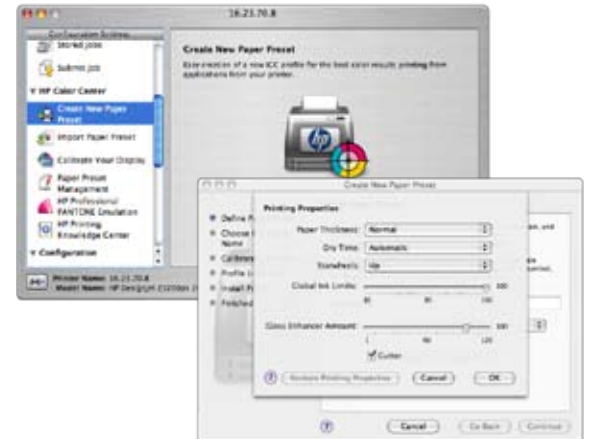
The Designjet Z3200's built-in X-Rite spectrophotometer and HP printer linearization and profiling software take the cost, effort, and guesswork out of printer color management. You are never more than a few mouse clicks and 20 minutes away from a professional ICC profile customized for your printer, paper, and environmental conditions. Custom HP profiles make the most of your Designjet's extended color gamut in reds, blues, and greens whether using matte fine art paper, satin or glossy photo paper, canvas, backlit film, or any of a wide range of other compatible substrates. Perfectly neutral black-and-white prints with extended tonal range, fine shadow detail, and continuous tone appearance are all unlocked by custom HP printer profiles.

Add the optional HP/X-Rite Advanced Profiling Solution (standard on PostScript® models) for additional flexibility and functionality such as monitor calibration and profiling, RGB and CMYK printer profiling, profile verification, and profile editing.⁸

Simplify workflows—easily access, create, and share paper presets using the enhanced HP Color Center

An enhanced HP Color Center offers a single point of control for all color-related functions.

From there, you can download or easily create your own Paper Presets, and have the option of more control using advanced settings.



Visit www.hp.com/go/Z3200/paperpresets to find paper presets for HP and other commercially available media.

“Neutral grays and color accuracy are of the utmost importance to my clients. They are very aware of the progress that has been made in digital printing and know that I’m at the forefront of the market. Yet when they see the prints from the HP Designjet Z3200, they are astonished at the incredible quality.”

Jack Lowe,
Proprietor, Jack Lowe Studio, Newcastle upon Tyne,
England



HP Designjet Z3200 PostScript printer at a glance

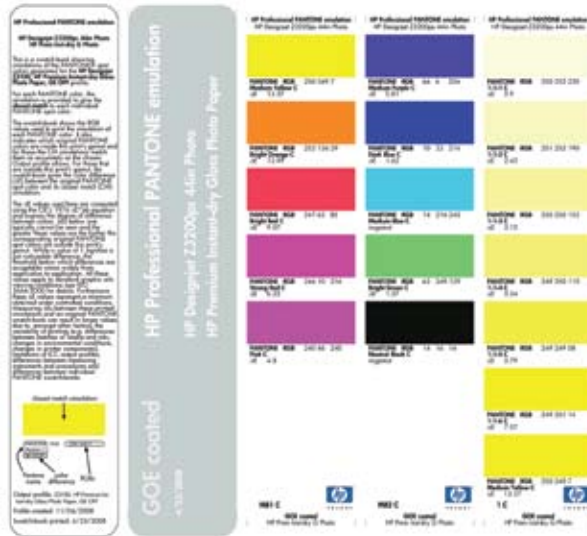
	Additional features	Benefits
Save costs	Automatic nesting with margin controls	<ul style="list-style-type: none"> Optimize use of media when printing several images
	In-printer processing with embedded TIFF, JPEG, and Adobe PS3/PDF RIP	<ul style="list-style-type: none"> Free-up your computer processing time Print 16-bit TIFF and JPEG images with HP Embedded Web Server's 16- to 8-bit LCED color converter
Advanced color management options	HP Advanced Profiling Solution	<ul style="list-style-type: none"> Calibrate your computer monitor (i1 display calibration device included) Edit RGB and CMYK ICC profiles More color patches for more sophisticated ICC profiles
	HP Professional PANTONE Emulation	<ul style="list-style-type: none"> Accurately achieve in-gamut colors and properly reproduce out-of-gamut colors Print customized spot color simulation swatch books for the media of your choice
Enhanced for workgroups and remote management	<ul style="list-style-type: none"> Driverless direct job submission Queuing Storage of files 	<p>Manage the printer remotely using HP Embedded Web Server:</p> <ul style="list-style-type: none"> Send print jobs to the printer without having to open the image from an application, from any computer (no driver needed). Easily manage your print job queue. Store jobs—with various print settings—on the printer for easy, frequent re-prints without ripping

HP Professional PANTONE Emulation

With 95% coverage of PANTONE colors, you can produce accurate spot-color proof prints for your design projects using the HP Designjet Z3200 PostScript printer.

- Assign PANTONE color names to graphical elements in your PS/PDF-capable design application, and have the printer automatically generate matching in-gamut colors and visually optimized equivalents for out-of-gamut colors, using a specific spot color rendering intent not available from standard ICC profiles*.
- Automatically create your own PANTONE swatch book illustrating the closest available match to PANTONE colors for the print medium selected. The printed color swatch comes with a numerical indication of how closely colors match, and the included device color values make it easier to create customized emulations for applications that do not support named colors completely**.

See www.hp.com/go/Z3200/PANTONE for detailed information about this printer's PANTONE coverage.



* For HP Professional PANTONE Emulation to work correctly, design applications must allow the assignment of the correct color name to design elements, and the name must be preserved intact in the PostScript or PDF file passed to a supported RIP with embedded HP Professional PANTONE Emulation technology. Since ink values are calculated based on colorimetric information present in an ICC profile, a correct and up-to-date ICC profile is required for the specific printer, inks, and media being used.

** These may be RGB or CMYK values, depending on your workflow.



